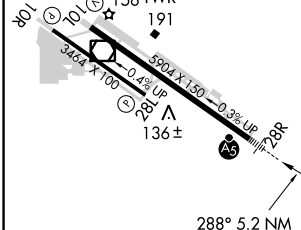
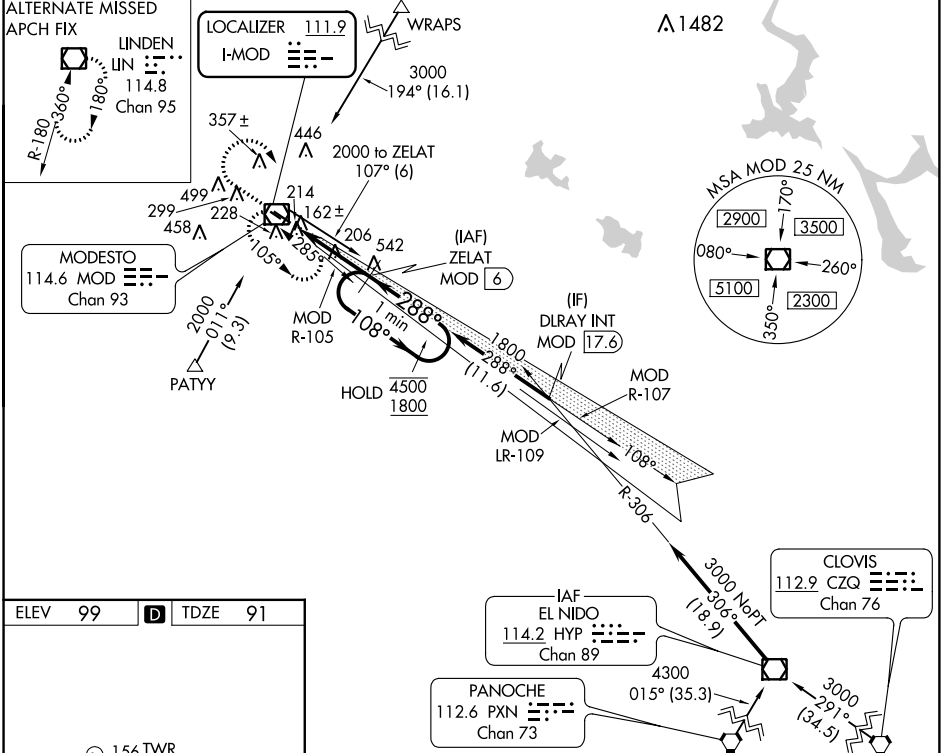


LOC I-MOD 111.9	APP CRS 288°	Rwy Idg 5904
		TDZE 91
		Apt Elev 99

ILS or LOC RWY 28R

MODESTO CITY-COUNTY-HARRY SHAM FIELD (MOD)

DME required for LOC only.		MALSR 	MISSED APPROACH: Climb to 1500 then climbing right turn to 2000 direct MOD VOR/DME and hold.	
Autopilot coupled approach NA below 1080. DME from MOD VOR/DME. Simultaneous reception of I-MOD and MOD DME required. For inop ALS, increase S-LOC 28R Cat C/D visibility to 1 SM.				
ATIS 127.7	NORCAL APP CON 120.95 269.45	MODESTO TOWER* 125.3 (CTAF) 257.8	GND CON 121.7	UNICOM 122.95



ELEV 99	D	TDZE 91
REIL Rwy 10L MIRL Rwy 10R-28L HIRL Rwy 10L-28R		

1500	2000	MOD	ZELAT MOD 6	One Minute Holding Pattern
*LOC only	MOD 0.8	*MOD 1.8	1800	108° → 4500 ← 288° 1800
		1 NM		4.2 NM

CATEGORY	A	B	C	D
S-ILS 28R	291-1/2		200 (200-1/2)	
S-LOC 28R	460-1/2	369 (400-1/2)	460-5/8 369 (400-5/8)	460-5/8 369 (400-5/8)
CIRCLING	540-1 441 (500-1)	560-1 461 (500-1)	600-1 1/2 501 (600-1 1/2)	660-2 561 (600-2)

SW-2, 27 FEB 2020 to 26 MAR 2020

SW-2, 27 FEB 2020 to 26 MAR 2020